

02/12-06-064-11W5/0

KB: 1101.0 m RR: 1987-07-06  
 TD: 2778.5 m [TVD] FormTD: SHM  
 Mode: Abd Zone Fluid: OI  
 GEOCAN UNIT JUDY A 12-6-64-11

749.3m to next well

00/10-06-064-11W5/0

KB: 3527.9 ft RR: 1962-01-31  
 TD: 9007.9 ft [TVD] FormTD: SHM  
 Mode: In Fluid: Solvent  
 ACCEL JUDYCK 10-6-64-11

2458.3ft to previous well

2744.0ft to next well

00/12-05-064-11W5/0

KB: 3679.1 ft RR: 1962-04-23  
 TD: 9334.0 ft [TVD] FormTD: WATT  
 Mode: Abd Zone Fluid: OI  
 ACCEL JUDYCK 12-6-64-11

2744.0ft to previous well

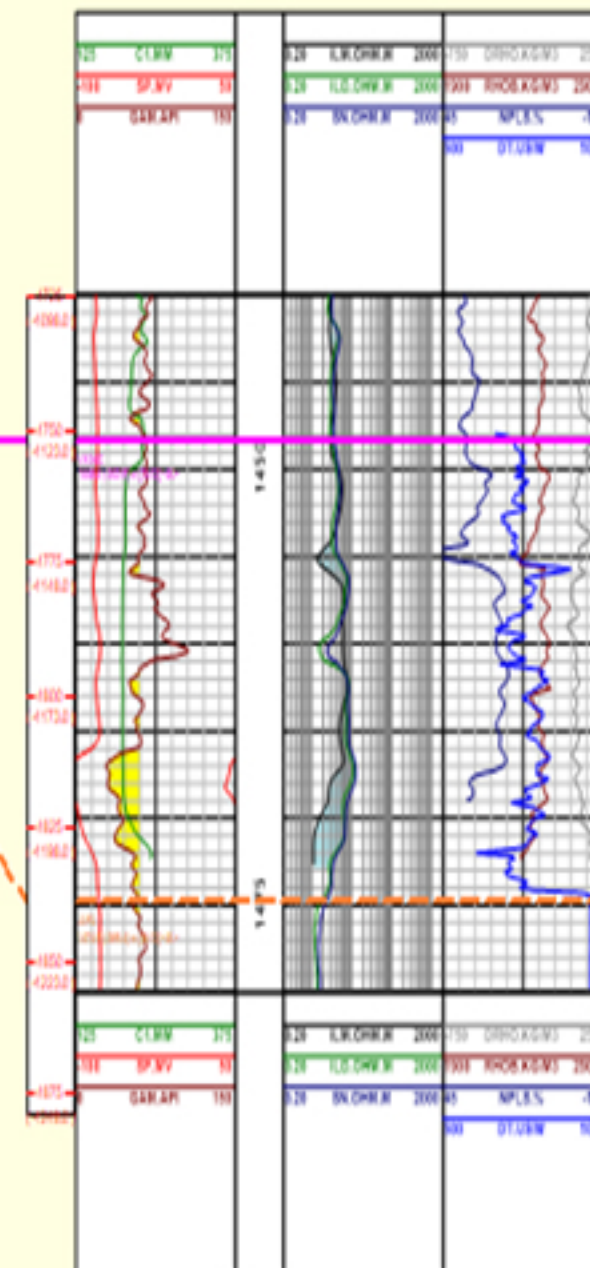
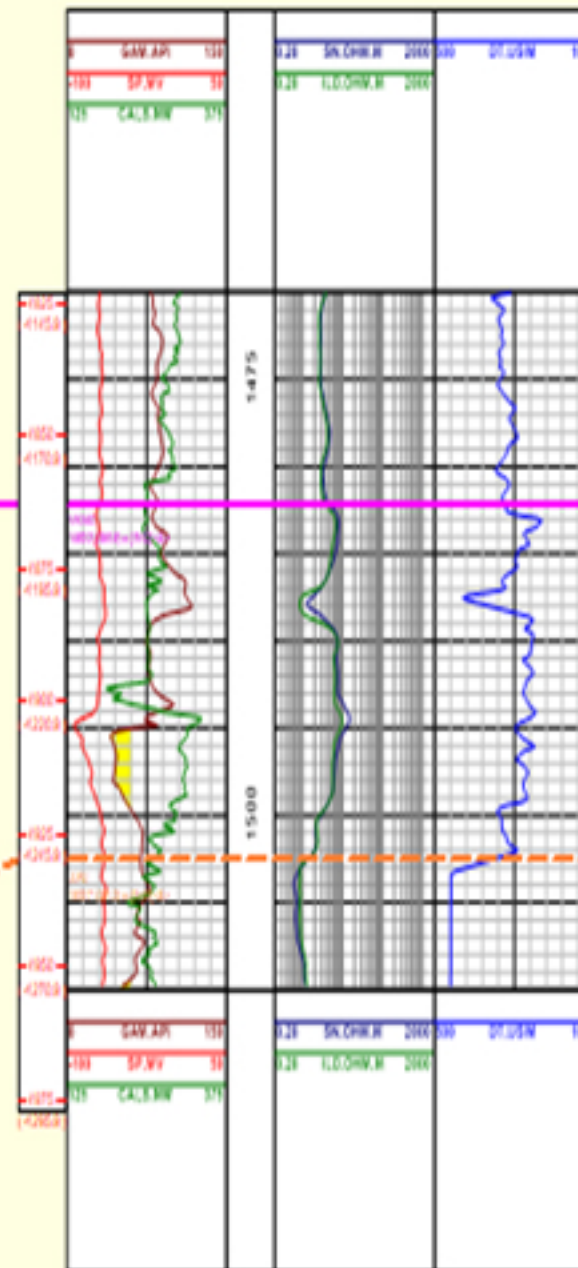
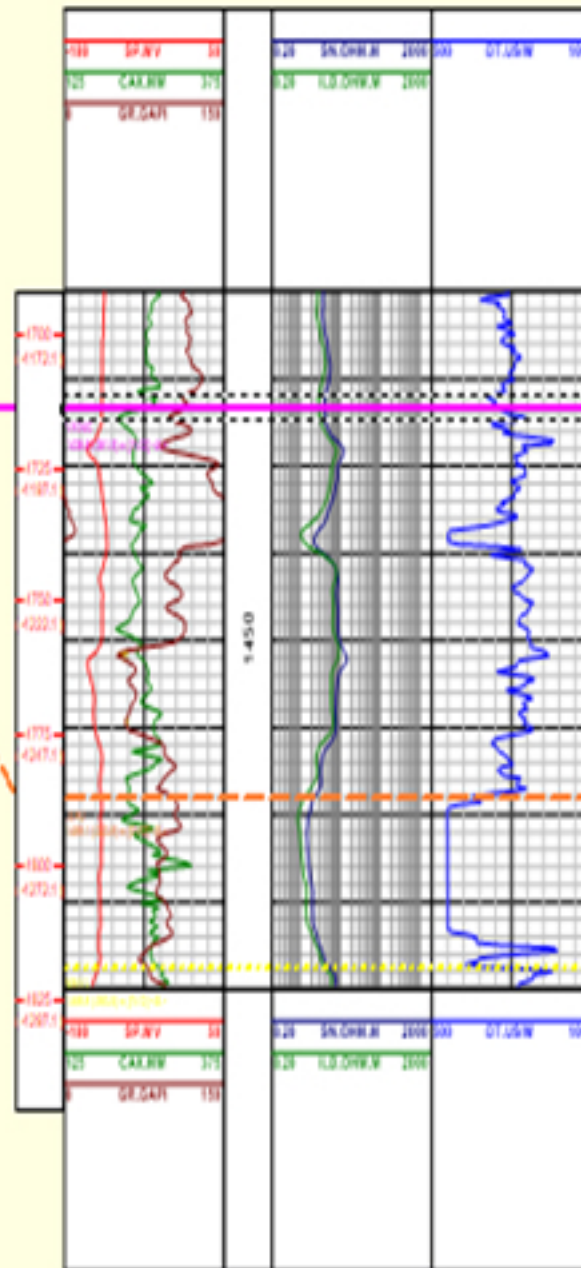
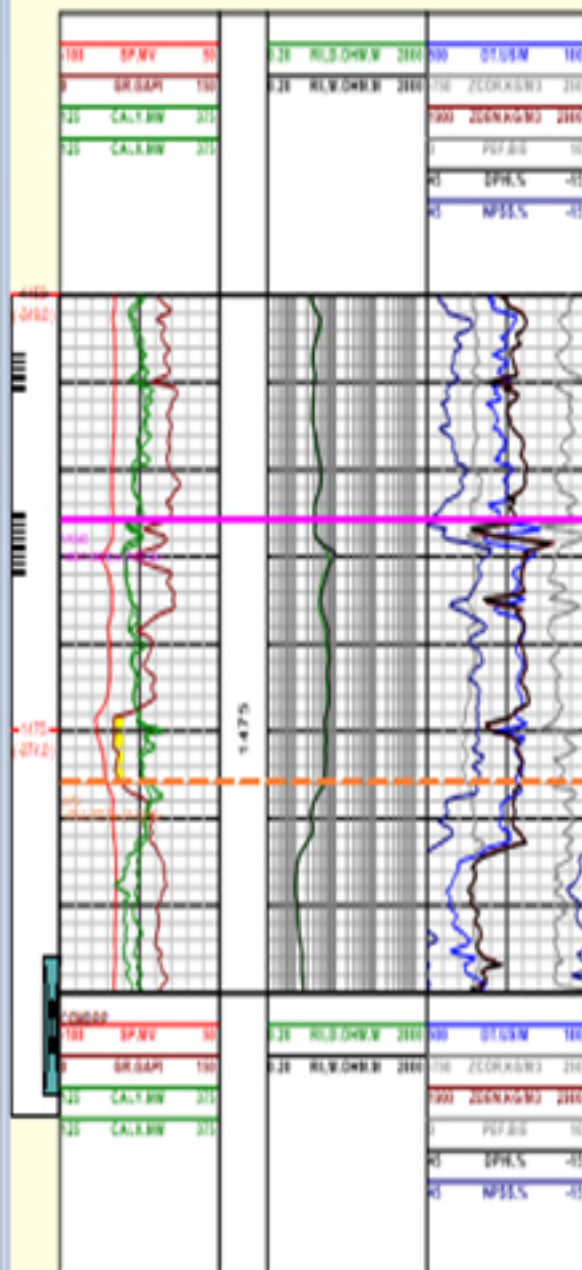
5457.0ft to next well

00/12-04-064-11W5/0

KB: 3627.0 ft RR: 1961-01-03  
 TD: 9041.0 ft [TVD] FormTD: SHM  
 Mode: Abd Fluid: Water Injection  
 ACCEL JUDYCK 12-6-64-11

5457.0ft to previous well

## VIKING



## UOI Information

Prod	Oil ( m3 )	Gas ( E3m3 )	Water ( m3 )
Cum	16146.3	21562.2	750327.8
Daily	10.0	13.4	466.8

## UOI Information

Prod	Oil ( STB )	Gas ( Mcf )	Water ( STB )
Cum	2271809.2	2435583.3	313948.1
Daily	777.0	705.2	561.3

## UOI Information

Prod	Oil ( STB )	Gas ( Mcf )	Water ( STB )
Cum	4119855.3	4943957.2	7216274.0
Daily	586.0	703.3	1026.5

## UOI Information

Prod	Oil ( STB )	Gas ( Mcf )	Water ( STB )
Cum	22413.9	12177.9	10.1
Daily	0.0	0.0	0.0