

A

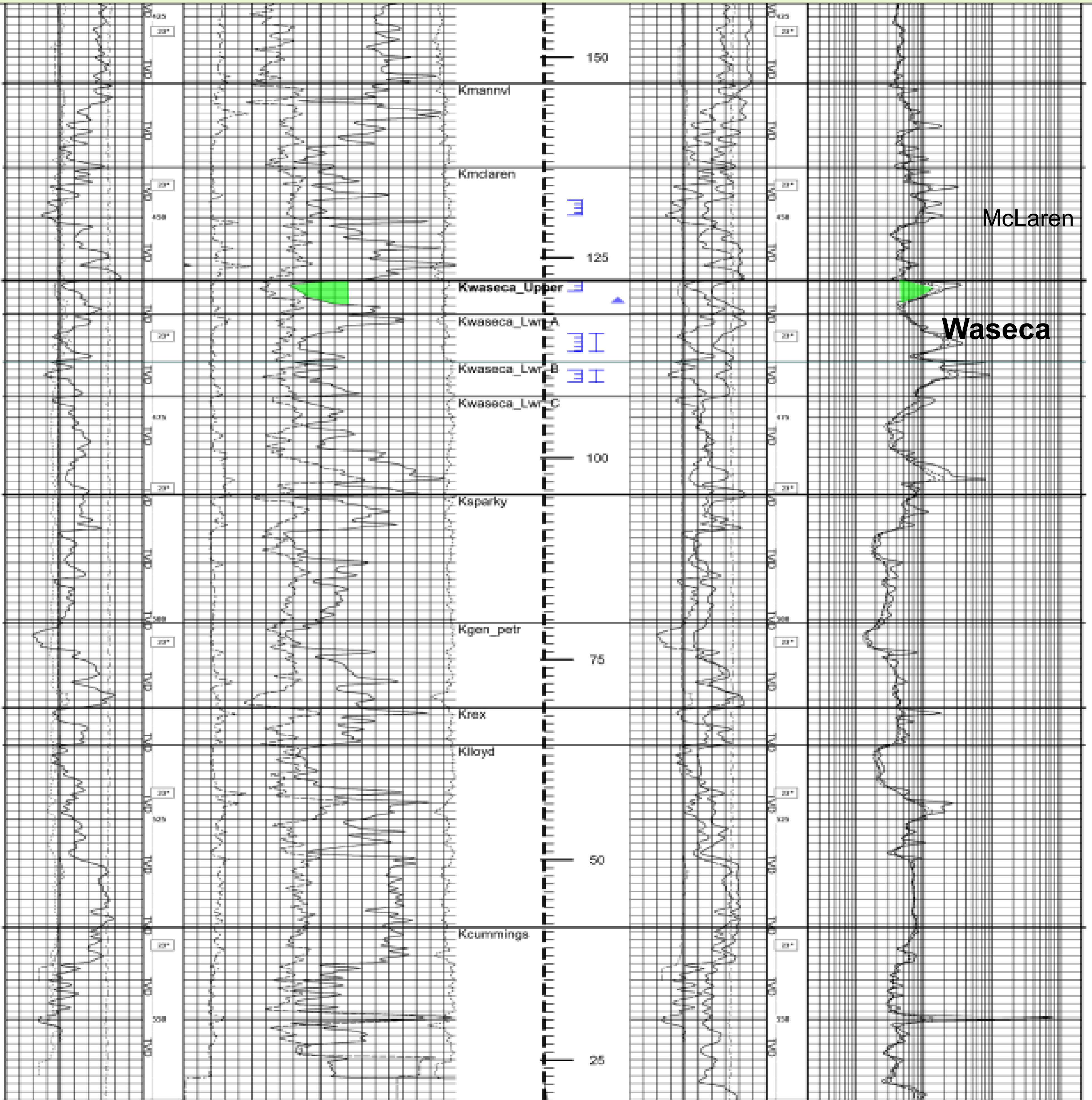
Waseca Enrg Inc  
2012/07/26  
642.0



West Lake Enrg Corp  
Kcumings  
563.1

A'

+580.1



McLaren

**Waseca**

ELV 17.0m

<b>X Caliper</b>	<b>Geo. Porosity (SS)</b>	
125 Millimeters 375	58.8	Percent 0.0
<b>Gamma Ray</b>	<b>Neut. Porosity (SS)</b>	
0 API 150	58.8	Percent 0.0
<b>Y Caliper</b>	<b>PhotoElectric Effect</b>	
125 Millimeters 375	0.0	18.0/100 Kilograms/Meter 0.0
<b>Tension</b>	<b>Density Correction</b>	
12000 Pounds 0		

<b>SP</b>	<b>208 Deep STI</b>	
100 Millivolts 50	0.20	MilliOhm Meters 2000.00
<b>Gamma Ray</b>	<b>208 Medium STI</b>	
0 API 150	0.20	MilliOhm Meters 2000.00
<b>Y Caliper</b>	<b>SP Resistivity</b>	
125 Millimeters 375	0.20	MilliOhm Meters 2000.00
<b>Tension</b>		
12000 Pounds 0		