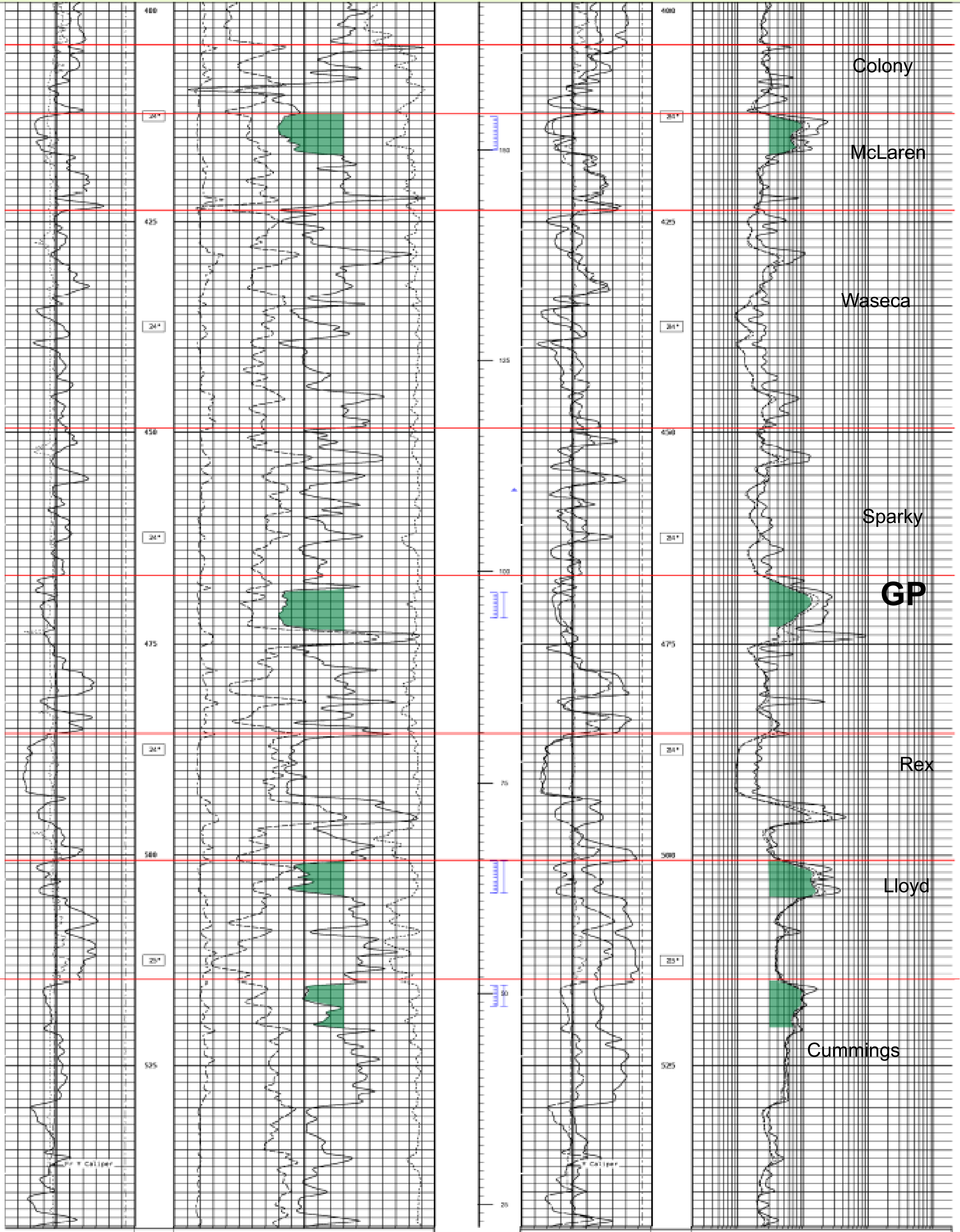


A

A'



<b>Z Caliper</b>	
125 Millimeters	375
<b>Gamma Ray</b>	
0 API	150
<b>Y Caliper</b>	
125 Millimeters	375
<b>Tension</b>	
00000 Kilograms	0

<b>Dens. Porosity (SS)</b>	
00.0 Percent	0.0
<b>Neut. Porosity (SS)</b>	
00.0 Percent	0.0
<b>PhotoElectric Effect</b>	<b>Density Correction</b>
0.0	10.0 / 450 Kilograms/Cu. Meter
	-50

<b>SP</b>	
-70 Millivolts	28
<b>Gamma Ray</b>	
0 API	150
<b>Y Caliper</b>	
125 Millimeters	375
<b>Tension</b>	
00000 Kilograms	0

<b>20K Deep STI</b>	
0.28 OhmMeters	2000.00
<b>20K Medium STI</b>	
0.28 OhmMeters	2000.00
<b>SPL Resistivity</b>	
0.28 OhmMeters	2000.00

Colony

McLaren

Waseca

Sparky

**GP**

Rex

Lloyd

Cummings