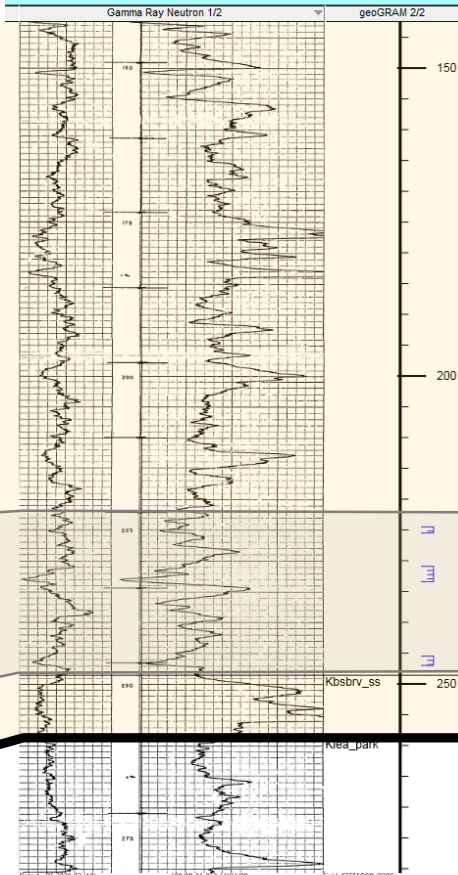
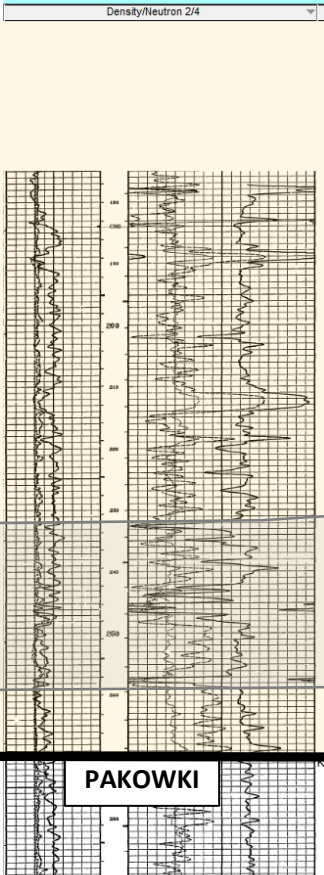
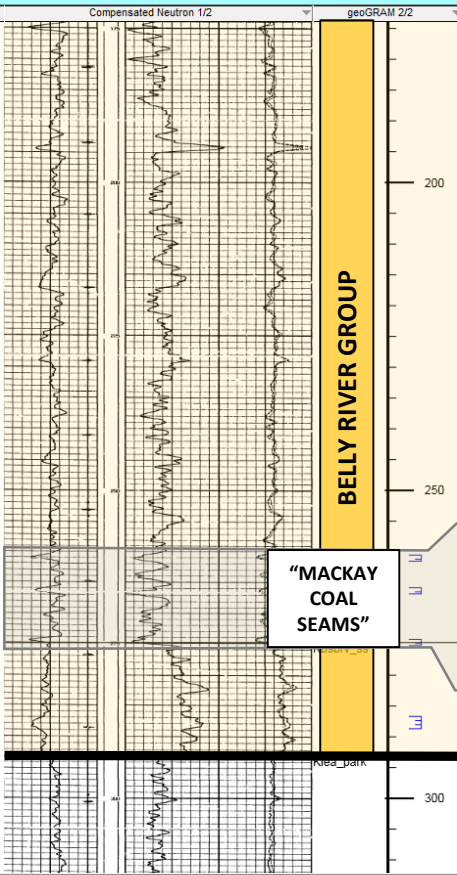


102/02-30-023-12W4/00

100/08-35-023-11W4/00

100/08-34-022-11W4/00



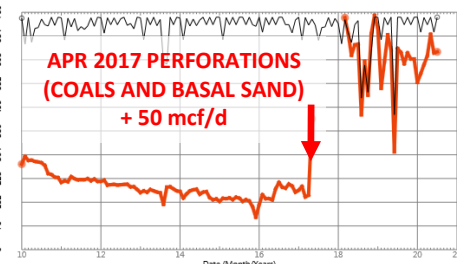
"MACKAY COAL SEAMS"

PAKOWKI

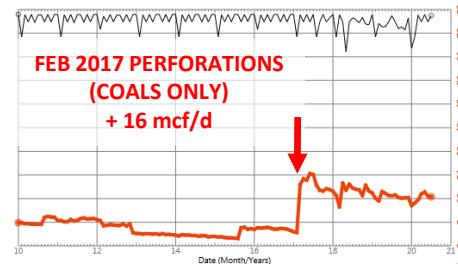
MILK RIVER

Well AC of 2003-07 (AB)
From: 2005-10
To: 2020-07
302/02-30-023-12W4/00
CNRL CESS 2-30-23-12
Flowing Gas
Frac: CESSFORD (0206)
Pool: COMMINGLED MHP9501 (8950166)
Unit:

Well AC of 2003-07 (AB)
From: 1983-11
To: 2020-07
100/08-34-022-11W4/00
CNRL CESS 8-34-22-11
Flowing Gas
Frac: CESSFORD (0206)
Pool: COMMINGLED MHP9501 (8950166)
Unit:



**APR 2017 PERFORATIONS
(COALS AND BASAL SAND)
+ 50 mcf/d**



**FEB 2017 PERFORATIONS
(COALS ONLY)
+ 16 mcf/d**

PRD Cal-Day Avg OIL (No Data)	Cum PRD OIL	0.0	Bbl	PRD Cal-Day Avg GAS (McF/Day)	0.0	Bbl
PRD Monthly Hours (hrs)	Cum PRD GAS	220.9	MMcf	PRD Cal-Day Avg FLD (No Data)	0.0	Bbl
PRD Ratios WTR/OIL (No Data)	Cum PRD WTR	0.0	Bbl	PRD Cal-Day Avg CND (No Data)	0.0	Bbl
DU 1st Day Avg Water (No Data)	Cum PRD HSE	127211.0	Hour			
PRD Ratio: GAS/OIL (No Data)	Cum DU WTR	0.0	Bbl			
	Cum PRD CND	0.0	Bbl			

PRD Cal-Day Avg OIL (No Data)	Cum PRD OIL	0.0	Bbl	PRD Cal-Day Avg GAS (McF/Day)	0.0	Bbl
PRD Monthly Hours (hrs)	Cum PRD GAS	310.3	MMcf	PRD Cal-Day Avg FLD (No Data)	0.0	Bbl
PRD Ratios WTR/OIL (No Data)	Cum PRD WTR	0.0	Bbl	PRD Cal-Day Avg CND (No Data)	0.0	Bbl
DU 1st Day Avg Water (No Data)	Cum PRD HSE	304516.0	Hour			
PRD Ratio: GAS/OIL (No Data)	Cum DU WTR	0.0	Bbl			
	Cum PRD CND	0.0	Bbl			

**REPRESENTATIVE WELL LOG
COR4 CESSFORD PROPERTY**