

## Property Divestiture: Oil & Natural Gas Prospects Various Areas, Alberta

## MKS INVESTMENTS LTD.

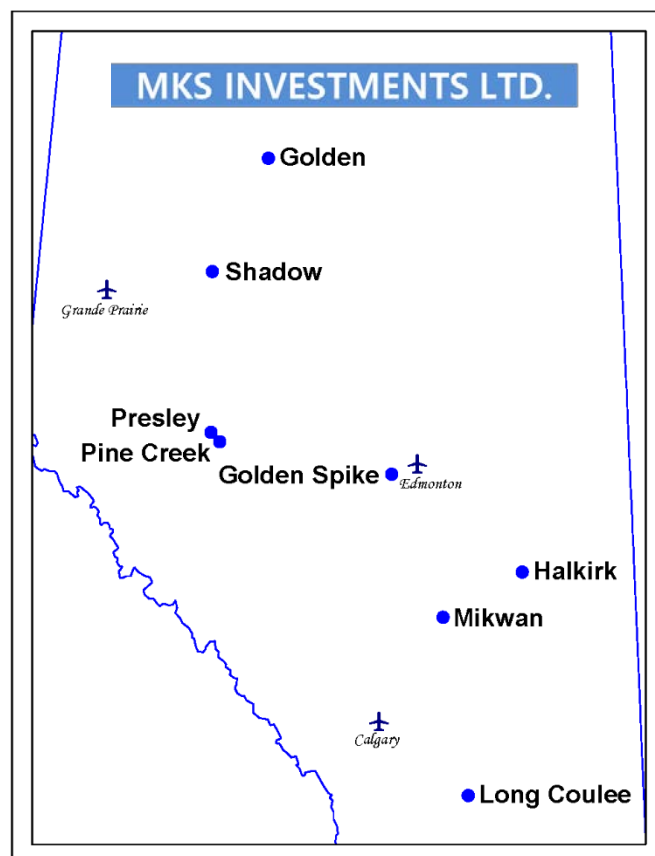
**MKS Investments Ltd.** ("MKS" or the "Company") has engaged **Sayer Energy Advisors** to assist the Company with the sale of its oil and natural gas interests located in Alberta (the "Properties").

The Properties consist of 100% working interests in five-year Crown mineral rights leases with prospective drilling locations for oil and natural gas primarily in the Cardium, Duvernay, Mannville, Montney, Slave Point and Viking formations.

The Properties comprise 62.25 sections of land located in the *Golden, Golden Spike, Halkirk, Long Coulee, Mikwan, Pine Creek, Presley* and *Shadow* areas of Alberta.

There is no production from the Properties. MKS believes there is potential to drill vertical and horizontal wells on its lands.

The Properties were acquired by MKS at different times and the remaining term varies for each lease. Further details on the leases are available in the virtual data room for parties that execute a confidentiality agreement.



## PROCESS & TIMELINE

Sayer Energy Advisors is accepting cash offers to acquire the Properties until **12:00 pm on Thursday, December 9, 2021.**

Timeline	
Week of November 8, 2021	Preliminary Information Distributed
Week of November 8, 2021	Data Room Opens
<b>December 9, 2021</b>	<b>Bid Deadline</b>
December 1, 2021	Effective Date
December 2021	Closing Date

*Sayer Energy Advisors does not conduct a "second-round" bidding process; the intention is to attempt to conclude transaction(s) with the party(ies) submitting the most acceptable proposal(s) at the conclusion of the process.*

**Sayer Energy Advisors is accepting cash offers from interested parties until noon on Thursday, December 9, 2021.**



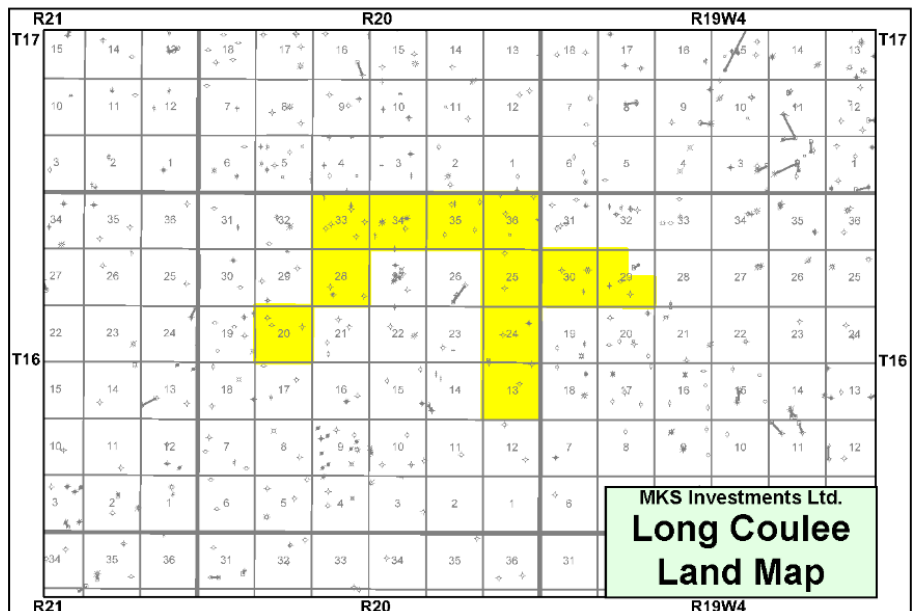
## Long Coulee Property

## Township 16, Range 19-20 W4

MKS has a 100% working interest in 10.75 sections of land at *Long Coulee* which are prospective for oil and natural gas from the Glauconitic Sandstone Formation and the Mannville A and Mannville B channels of the Upper Mannville Group. The Company does not have any production from the *Long Coulee* property.

The Company acquired Crown lands at *Long Coulee* which are located in the middle of Upper Mannville and Glauconitic Channel production areas.

There is significant production from vertical wells in surrounding fields and potential to increase productivity by drilling horizontal wells.

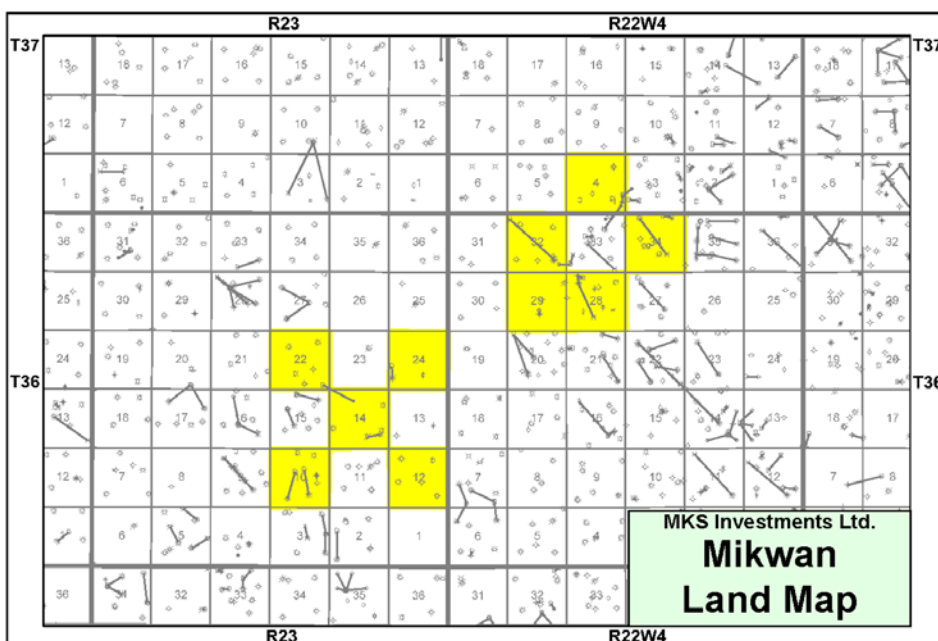


The Glauconitic Sandstone Formation and Mannville A and B pools at *Long Coulee* are found at depths of between approximately 1,000 and 1,200 metres and each consist of up to 10 metres of net pay.

MKS has identified up to 10 drilling locations in the Upper Mannville on its lands at *Long Coulee*.

## Mikwan Property

## Township 36-37, Range 22-23 W4



At *Mikwan*, the Company holds 100% working interest in 10 sections of land which are prospective for oil from the Duvernay Formation.

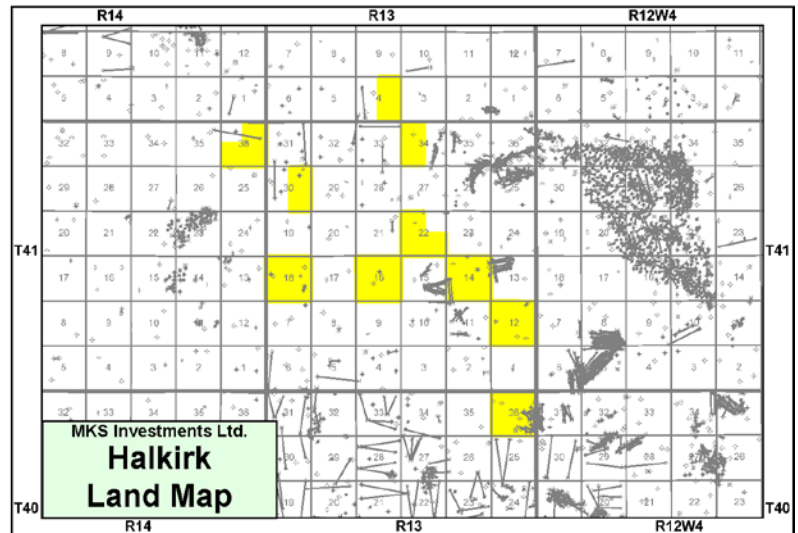
The Company has also identified potential for drilling in the Mannville Group. The Company does not have any production from the *Mikwan* property.

The Duvernay Formation at *Mikwan* is an upper Devonian marine shale reservoir. The Duvernay is found at a depth of approximately 2,000 metres and consists of approximately 10-15 metres of net pay using a 6% porosity cut-off.

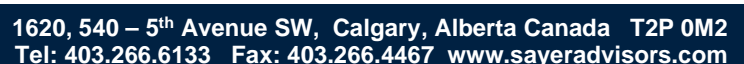
MKS believes there is potential for up to 40 horizontal drilling locations in the Duvernay Formation on its lands at *Mikwan*, as well as potential locations in the Mannville Group on Sections 10 and 22-036-23W4.



The Viking Formation at *Halkirk* is a sandstone reservoir of the Cretaceous Colorado Group. The Viking is found at a depth of approximately 800 metres and consists of a maximum net pay of eight metres using a 12% porosity cut-off.



MKS believes there is upside potential for a waterflood in the Viking at *Halkirk* which would increase the recovery factor from 5% to 15%.

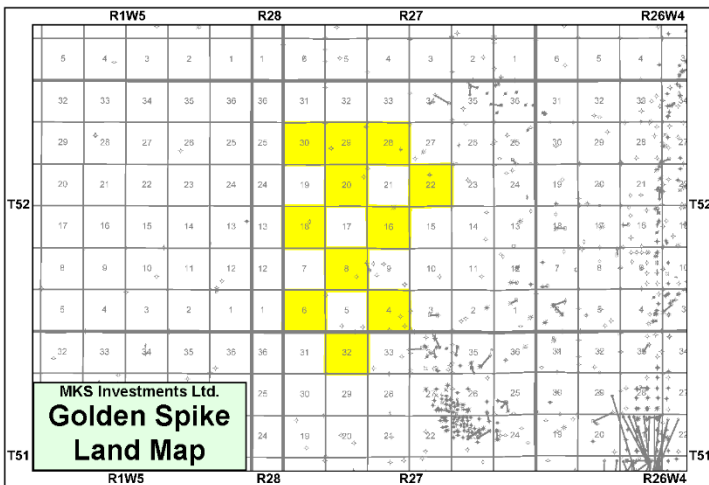






## Golden Spike Property

## Township 51-52, Range 27 W4

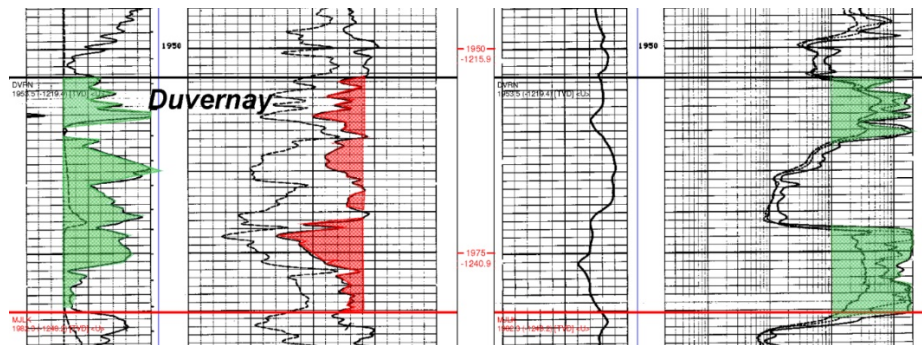


At *Golden Spike*, the Company holds a 100% working interest in 11 sections of land which are prospective for oil from the Duvernay Formation. The Company does not have any production from the *Golden Spike* property.

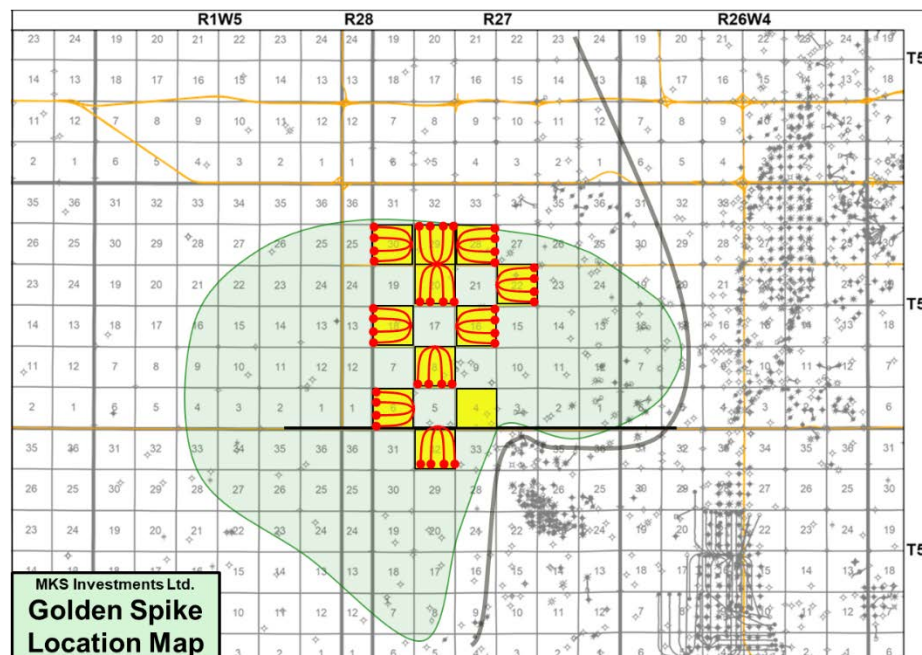
The Duvernay Formation at *Golden Spike* is an upper Devonian limestone reservoir found at a depth of approximately 2,200 to 2,400 metres and consists of net pay of 20-25 metres using a 3% limestone porosity cut-off.

The following well log shows the Duvernay Formation offsetting MKS' lands at *Golden Spike*.

### Dart Et Al Stony Plain 00/03-12-052-01W5/0 – Duvernay Formation Log



MKS has identified up to 40 horizontal drilling locations on its lands at *Golden Spike* as shown on the following map.





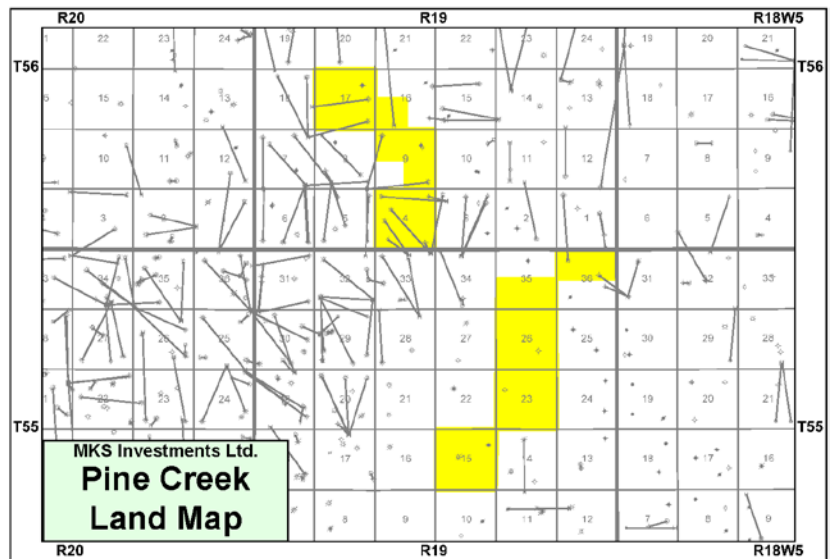
## Pine Creek Property

## Township 55-56, Range 19 W5

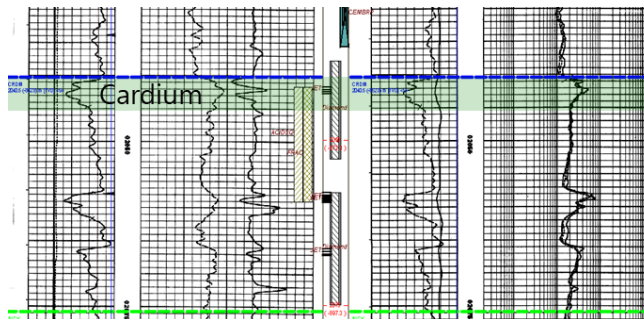
At *Pine Creek*, the Company holds a 100% working interest in seven sections of land which are prospective for oil from the Cardium Formation. The Company does not have any production from the *Pine Creek* property.

The Cardium Formation at *Pine Creek* is a regional shoreface sandstone reservoir with a stratigraphic trap. The Cardium A zone is found at a depth of approximately 2,000 metres and consists of net pay of up to five metres using a 6% porosity cut-off.

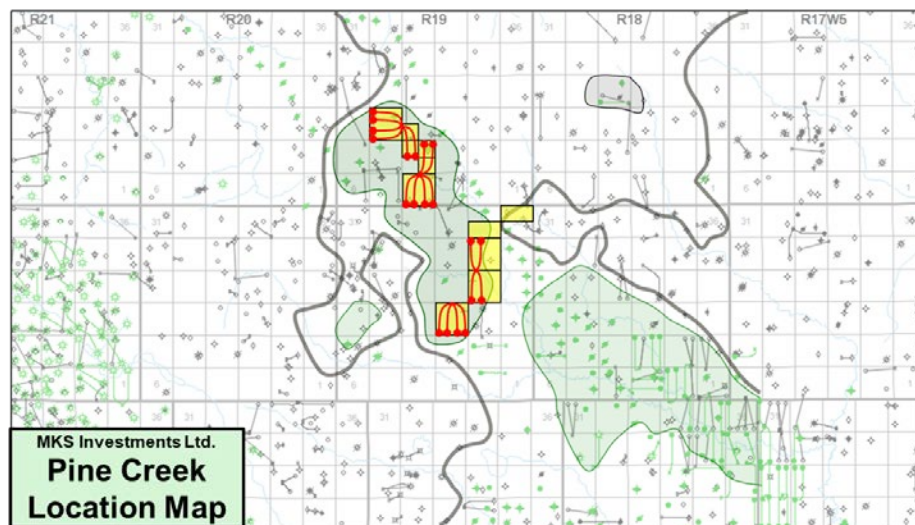
The following well log shows the Cardium A zone on MKS' lands at *Pine Creek*.



### SOC Pine Ck 02/09-09-056-19W5/0 – Cardium Formation Log



MKS has identified up to 20 horizontal drilling locations from the Cardium A on its lands at *Pine Creek* as shown on the following map.



The Company believes the Cardium wells at *Pine Creek* have estimated ultimate recovery of 156,000 boe per well.

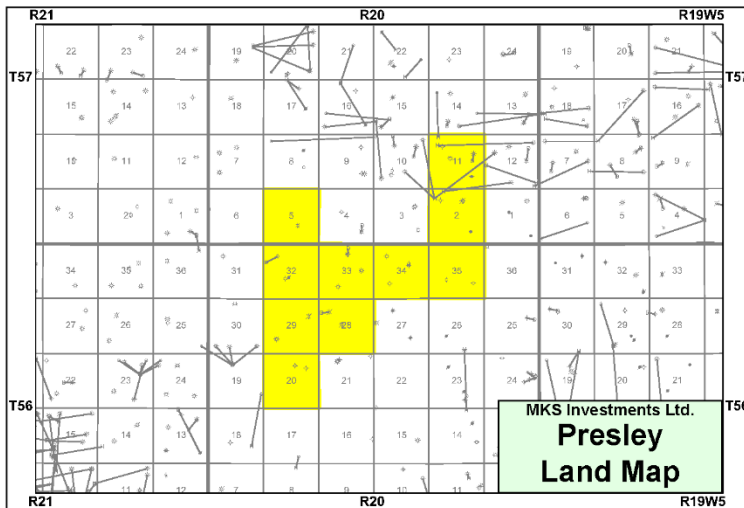






## Presley Property

## Township 56-57, Range 20 W5

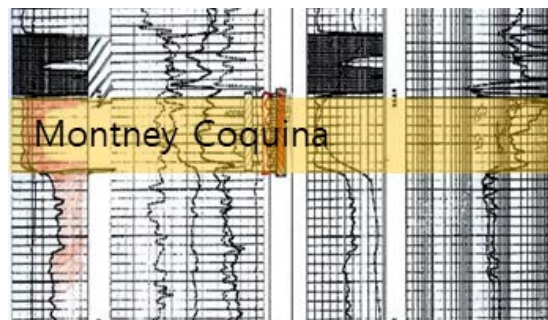


At *Presley*, the Company holds a 100% working interest in 10 sections of land which are prospective for liquids-rich natural gas from the Montney and Duvernay formations. The Company does not have any production from the *Presley* property.

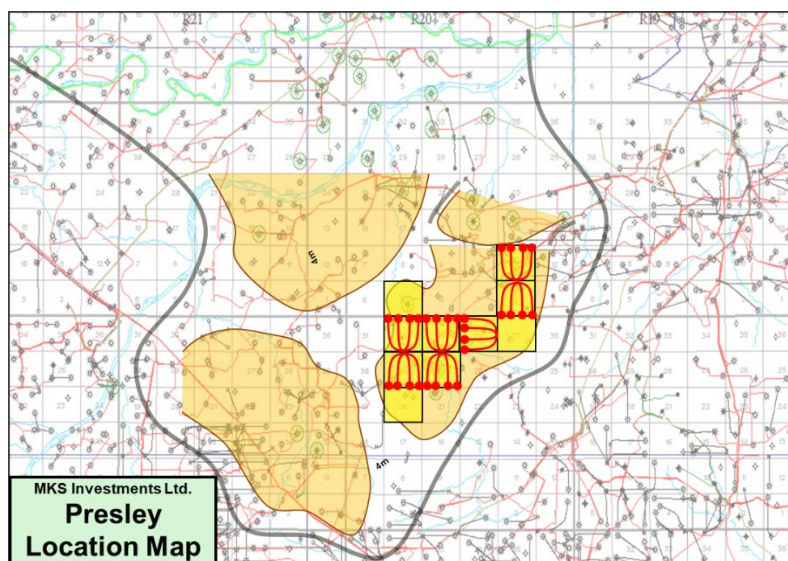
The Montney Formation at *Presley* is a middle Triassic dolostone and coquina reservoir found at a depth of approximately 2,700 metres and consists of net pay of up to five metres using a 6% porosity cut-off.

The following well log shows the Montney Formation offsetting MKS' lands at *Presley*.

### ACL Pine Ck 00/11-14-057-20W5/0 – Montney Formation Log



MKS has identified up to 28 horizontal drilling locations in the Montney Formation on its lands at *Presley* as shown on the following map.



The Company believes the Montney wells at *Presley* have estimated ultimate recovery of 545,000 boe per well. MKS also believes there is upside potential for drilling in the nine sections of Duvernay rights at *Presley*.





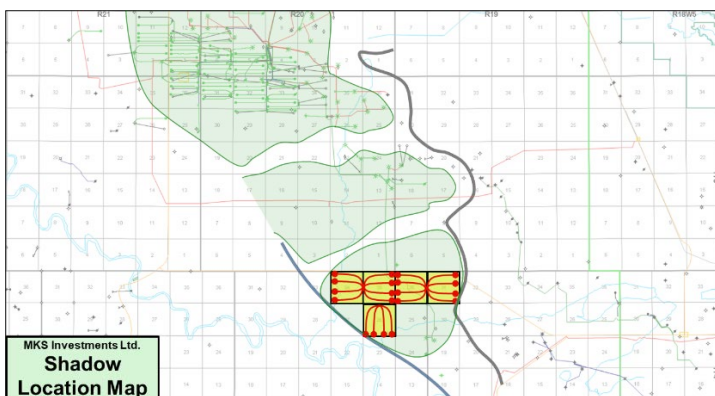
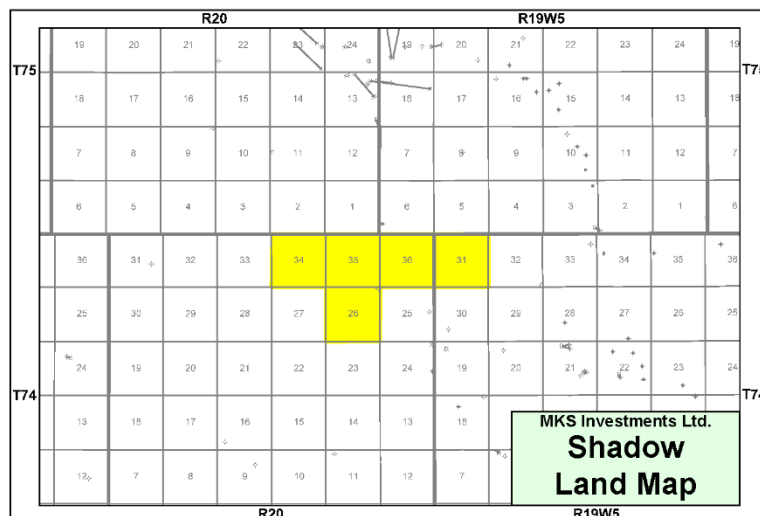
## Shadow Property

At *Shadow*, MKS has a 100% working interest in five sections of land, which are prospective for oil from the Montney Formation. The Company does not have any production from the *Shadow* property.

The Company's lands at *Shadow* are immediately south of **Long Run Exploration Ltd.**'s Montney oil development at *Girouxville*.

The Montney Formation at *Shadow* is a middle Triassic sandstone/siltstone reservoir found at a depth of approximately 1,050 metres and consists of a maximum net pay of 10 metres using a 9% porosity cut-off.

## Township 74, Range 19-20 W5



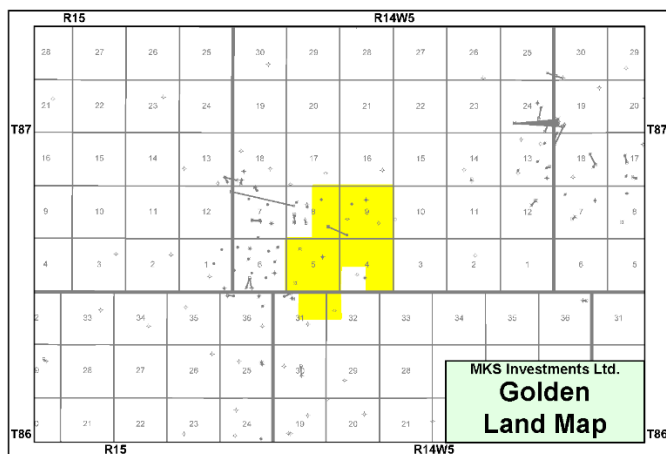
There is offsetting light oil production in the area from Long Run.

MKS has identified 20 horizontal drilling locations on its lands at *Shadow* as shown on the offsetting map.

The Company believes the Montney wells at *Shadow* have estimated ultimate recovery of 138,000 boe per well.

## Golden Property

## Township 86-87, Range 14 W5



At *Golden*, MKS has a 100% working interest in approximately 3.75 sections of land, which are prospective for oil from the Slave Point and Gilwood formations. The Company does not have any production from the *Golden* property.

The Company's lands at *Golden* are east of **Spoke Resources Ltd.**'s Slave Point oil pool.

The Slave Point Formation at *Golden* is a partially dolomitized carbonate reservoir immediately overlying the granites of the Precambrian and is found at a depth of approximately 1,620 metres.

The Golden Slave Point 'A' Pool consists of a maximum net pay of 12 metres using a 12% porosity cut-off.

MKS has identified eight horizontal drilling locations on its lands at *Golden*. MKS also believes there is upside potential for drilling in the Gilwood Formation at *Golden*.

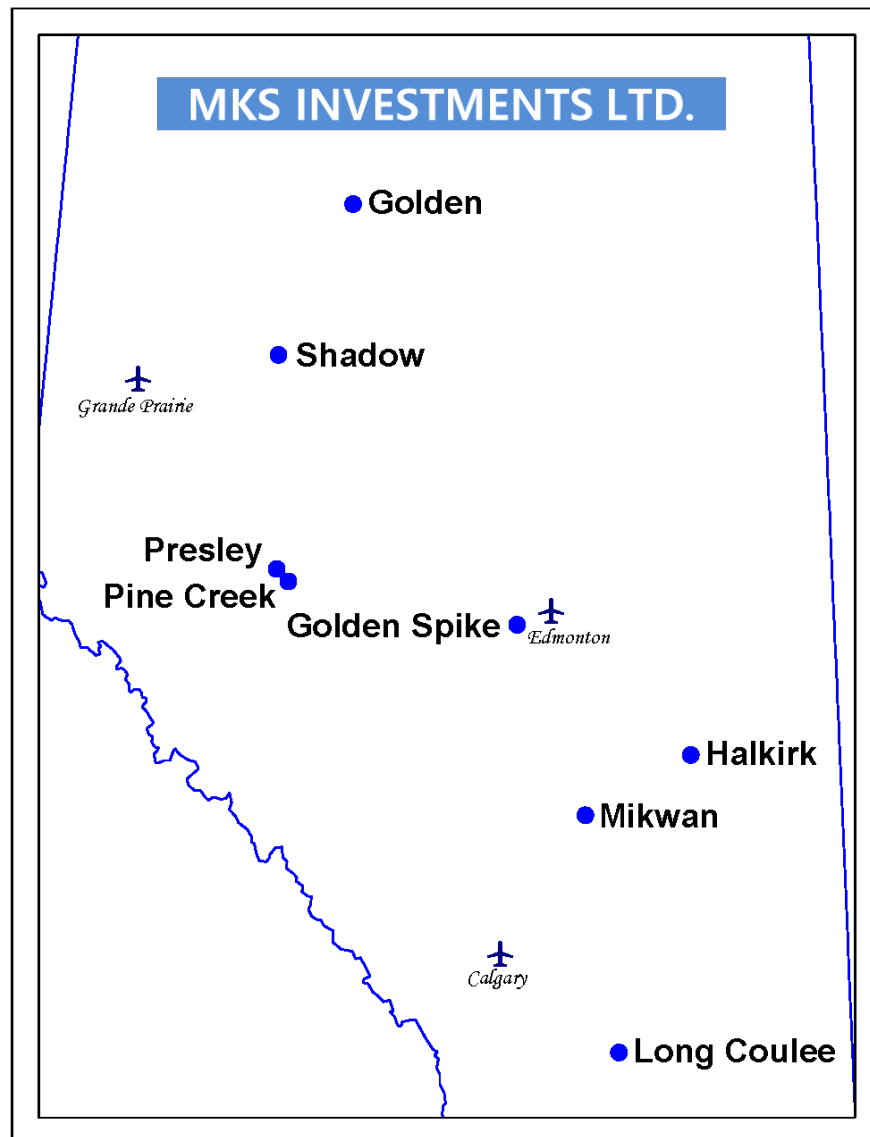




**BID DEADLINE: 12:00 pm December 9, 2021**

**Property Divestiture**

# **MKS Investments Ltd. Property Divestiture Fall 2021**



Parties wishing to receive access to the confidential information with detailed technical information relating to this opportunity should execute the Confidentiality Agreement which is available on Sayer Energy Advisors' website ([www.sayeradvisors.com](http://www.sayeradvisors.com)) and return one copy to Sayer Energy Advisors by courier, email ([brye@sayeradvisors.com](mailto:brye@sayeradvisors.com)) or fax (403.266.4467).

Included in the confidential information is the following: mineral property reports, geological presentations and other relevant technical information.

To receive further information on the Properties please contact Ben Rye, Tom Pavic or Grazina Palmer at 403.266.6133.



1620, 540 – 5<sup>th</sup> Avenue SW, Calgary, Alberta Canada T2P 0M2  
Tel: 403.266.6133 Fax: 403.266.4467 [www.sayeradvisors.com](http://www.sayeradvisors.com)