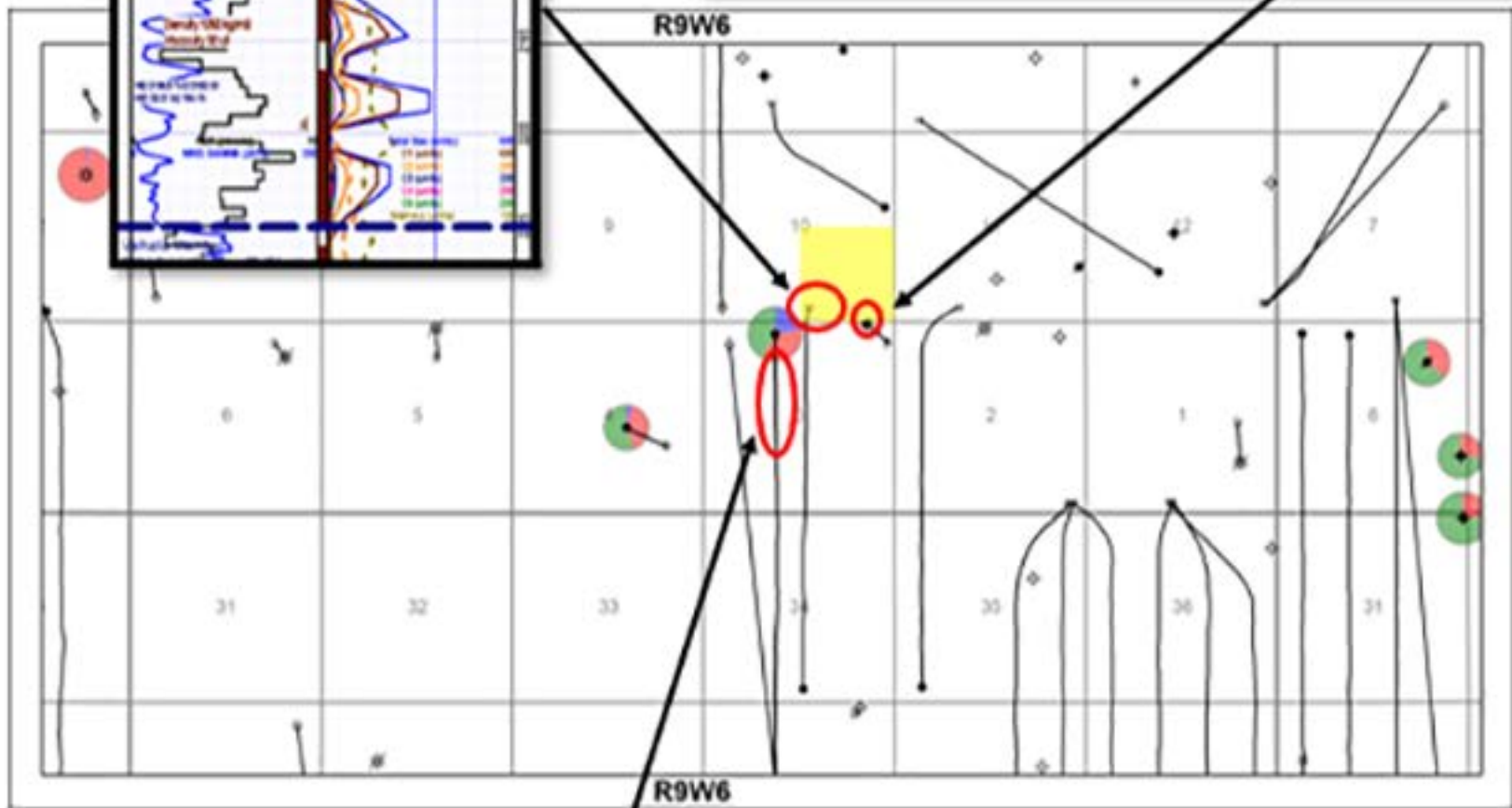


**Strong Gas Vertical Log Responses in Braeburn Member**

**16-03-73-09W6 Braeburn Strip Log**

decr w/ depth. 30-40% bright crm-off wh fluo Milky wh flash cut o  
 mod blooming cut, strng yell crm ring fuor. v ps br, ll - mod tea



**End of 14-03 has ~70m of High Gas Readings( above 500 units)**

