

A**00/13-13-049-09W5/0**

KB: 856.9 m RR: 2005-08-07
 TD: 2059.0 m [TVD] FormTD: NRDG
 Mode: Abnd Fluid: N/A
 SLE PEMBINA 13-13-49-9



12273.4m to next well < 12273.4m to previous well

02/16-15-048-08W5/0

KB: 893.6 m RR: 1994-11-19
 TD: 2160.0 m [TVD] FormTD: BNFF
 Mode: Pump Fluid: Oil
 BAYTEX PEMBINA 16-15-48-8



4899.7m to next well > 4899.7m to previous well

02/14-35-047-08W5/0

KB: 925.3 m RR: 2003-06-05
 TD: 2177.0 m [TVD] FormTD: PKSK
 Mode: Abnd Fluid: N/A
 CVE PEMBINA 14-35-47-8



2717.1m to next well < 2717.1m to previous well

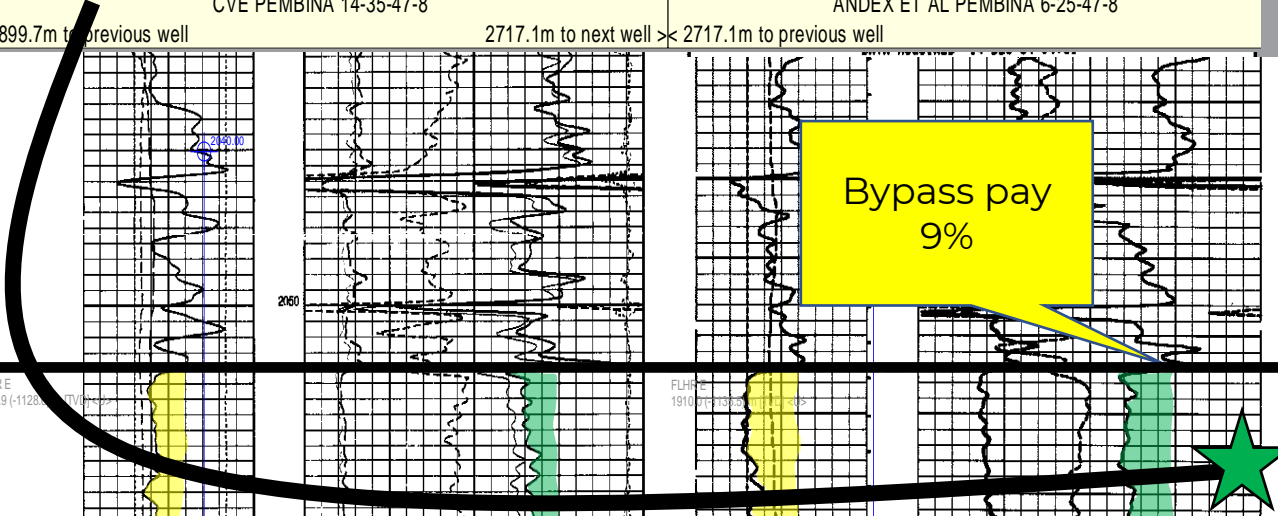
02/06-25-047-08W5/0

KB: 774.5 m RR: 1984-12-17
 TD: 2098.5 m [TVD] FormTD: BNFF
 Mode: Abnd Fluid: N/A
 ANDEX ET AL PEMBINA 6-25-47-8

**A'**

10-13%
 0.1-5.0 md
 Oil Stn

Bypass pay
 9%



Proposed
 LOC: 16-25

